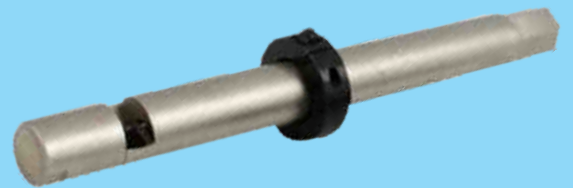


TUBE REMOVAL TOOLS



SHINGARE
INDUSTRIES PVT LTD

MANUFACTURER & EXPORTER OF

Tube Cleaners, Tube Tools,
Tube Expanders, Bolting Tools, Impact Sockets,
Pipe Beveling Machines, Pipe Cold Cutting Machines,
High Pressure Water Jet Cleaning Machines & Tapping Machines

Education is necessary but not a pre-requisite for success in life. Bhartiya Industries is the best example of this theory. **Mr. Suryakant Shingare** (HARIBHAI), the founder of the company is a non-matriculate technocrat with more than 10 years experience in flexible shaft manufacturing. He founded this company in 1989.



Basic Products:

Engineering products is our forte. We manufacture engineering products such as tube expander, tube cleaner, tube tools, hydraulic tube expansion, tube pulling, and pipe beveling machines. We also deal in manufacture of flexible shaft grinders, construction equipment, hydraulic torque wrench, impact socket, pneumatic tapping machines, and many more...

Brief History of the Company:



We were a small industry until 2003 engaged in production and supply of different types of flexible shafts for tube cleaning, brushes, flexible shaft grinder, and concrete vibrators. The year 2003 was a watershed year for the company.

Mr. Pradip Shingare, son of **Mr. Hari Shingare**, graduated from Mumbai University with a degree in Mechanical Engineering. He had great plans to take the company forward on the route to expansion. He ventured into export of the engineering products. By 2008, the company acquired the reputation as the largest exporter of tube cleaning machines and flexible shafts in India.

The year 2009 saw the expansion of the company into manufacture of products such as Tube expander, tube tools, and tube pulling machines. The company witnessed a record double-digit growth in this product range. In 2011, the company started developing a product range of pipe beveling machines. These machines are extremely popular in India as well as in the overseas market. The year 2013 witnessed the company foray into imports of different types of tools such as tapping tools, grinding tools, etc making us the leading player in India in these categories.

The year 2015 saw us entering into the sugar industry component with the manufacture of the Heavy Duty Sugar Dust Collector machine, FlexRepair40 machine.

In 2016, we added **SHINGARE INDUSTRIES PVT. LTD.** a new company in our group. We were awarded ISO 9001:2015 certification for strictly followed quality norms and processes.

Dedicated Staff:

We have a dedicated team of more than 40 people, many of whom are with us since the early days of the company. We have an excellent blend of youth, knowledge, and experience in our ranks.

Export oriented:

We export over 60% of our products to more than 55 countries all over the globe.

Expansion:

We feel the need to expand our business to enable us to serve the people of this country better. With this aim in mind, we established a new company in the name of SHINGARE INDUSTRIES PVT. LTD.

Our main motto of business is “Growth with Trust.”

Our mission is to innovate and create an import substitute products in India.

CONTENTS

Sr. No.	Product	Page
1.	Tube Wall Reducer	4
2.	Tube Drift / Knock Out Tool	
3.	Collapsing Tool	
4.	Pneumatic Chipping Gun	
5.	Push Type Internal Tube Cutter-BATP Series	5
6.	Internal Tube Cutter - BPR 68 Series	
7.	Tube Plugs	6-7
8.	Rubber Tapered Tube Plugs	
9.	One Revolution Internal Tube Cutter- BOTC Series	8
10.	Manual Tube Puller	9
11.	Pine Jenny Style Tube Pulling Accessorie	10

Our Successful Participation in Trade Fairs and Conventions in INDIA and Overseas.



SISSTA BENGALURU 2015



SISSTA, CHENNAI 2016



SISSTA, TIRUPATI 2017



MAHATECH, PUNE 2015



STAI, NEW DELHI 2016

TUBE REMOVAL TOOLS

TUBE WALL REDUCER

Size Available :3/8" O.D.to 4" O.D.



FEATURES:

- Wall reducers available for mm tube sizes also. Please enquire.
- Wall reducers are suited for tube sheets up to 5 "thick.Longer reaches are available.
- Its is used to 'thin' the walls of heavy gauge tubes as a step in their removal from tube sheet.

Tube O.D. Inch	Model No.	MT Shank #
3/8	WR-375	1
1/2	WR-500	2
5/8	WR-625	2
3/4	WR-750	2
7/8	WR-875	3
1	WR-1000	3
1.1/4	WR-1250	3
1.1/2	WR-1550	3
1.3/4	WR-1750	3
2	WR-2000	3
2.1/2	WR-2500	4
2.3/4	WR-2750	4
3	WR-3000	4
3.1/4	WR-3250	4
3.1/2	WR-3500	4
4	WR-4000	4

TUBE DRIFT/KNOCK OUT TOOL

Size Available :3/8" O.D.to 4" O.D.



FEATURES:

- Tube drifts are available for mm tube sizes also.Please enquire.
- It is used to make walls of heavy gauge tubes more thin as a pre-requisite step in their removal from tube sheet.
- Available in 01 & 06 shanks as standard. 15 (Jumbo) as a step in their removal from tube sheet. shank available on request.

Tube O.D. Inch	Model No.
3/8	KT-375
1/2	KT-500
5/8	KT-625
3/4	KT-750
7/8	KT-875
1	KT-1000
1.1/4	KT-1250
1.1/2	KT-1500
1.3/4	KT-1750
2	KT-2000
2.1/2	KT-2500
2.3/4	KT-2750
3	KT-3000
3.1/4	KT-3250
3.1/2	KT-3500
4	KT-4000

COLLAPSING TOOL

Size Available :3/8" O.D.to 2.1/2" O.D.



- Collapsing tools are used to tube collapse tube & drive out collapsed tube from tube sheet with chipping hammer.
- Available in 01 & 06 shanks
- Collapsing tools are available for mm tube sizes. Please inquire

Tube O.D. Inch	Model No.
3/8	CT-375
1/2	CT-500
5/8	CT-625
3/4	CT-750
7/8	CT-875
1	CT-1000
1.1/4	CT-1250
1.1/2	CT-1500
1.3/4	CT-1750
2	CT-2000
2.1/2	CT-2500

PNEUMATIC CHIPPING GUN

Chipping Hammer with safety retainer for use with Tube Drifts / Collapsing Tools.

MODEL CH-1- SPECIFICATION

Blows/min	Bore	Stroke	Weight
1600	1.1/8"(28.5mm)	3.1/4"(82.5mm)	7kg

MODEL CH-2- SPECIFICATION

Blows/min	Bore	Stroke	Weight
2300	1.1/8" (28.5mm)	2" (50.8 mm)	7kg



PUSH TYPE INTERNAL TUBE CUTTER- BATP SERIES

Size Available : 5/8" O.D. to 1.1/2" O.D.



Tube O.D	Tube Gauge (BWG)	Spare Cutting Bit Model No.	Tube Cutter Model No. (Std.Reach)
5/8"	14-22	BATP-625-SB	BATP-625
3/4"	14-22	BATP-750-SB	BATP-750
7/8"	14-22	BATP-875-SB	BATP-875
1"	12-22	BATP-1000-SB	BATP-1000
1.1/4"	12-22	BATP-1250-SB	BATP-1250
1.1/2"	12-22	BATP-1500-SB	BATP-1500

FEATURES:

- BHARTIYA "Push Type" internal tube cutter quickly cuts through the walls of ferrous tubes in condensers and Heat exchanger as step in their removal from the tube sheet.
- This sturdy "Push Type" internal tube cutters can be used with a portable Electric or Air Drill Motor.
- "Push Type" cutter is simple to operate. Merely insert it into the tube. Apply power press inward and the tube can be cut in few seconds. Releasing of inward pressure
- Automatically retracts the Cutter Bit. This cutter is equipped with an adjustable collar suitable for reaching into tubes at various depths.
- The replaceable cutting bit can be interchanged in a few seconds. Standard adjustable reach is 4" (101.6mm) and they are available in optional

INTERNAL TUBE CUTTER - BPR 68 SERIES

Size Available : 1/2" O.D. to 4.1/2" O.D.



FEATURES:

- The internal tube cutter BPR-68 is driven via the square in a clockwise direction using either an electric, pneumatic, or hydraulic driving machine.
- BPR-68 tube cutters are ideal for cutting thick walled boiler tubes of 2" O.D. & higher.
- BPR-68 type tube cutters are available in standard reach of 4" (100mm). Additional reaches in increments of 4" are available up to 16" (400mm)

Tool Model No.	Size	Spare Bite Model No.	Tube I.D. Range		Max Tube O.D.		Body Diameter		Drive Square Male
			Inch	Mm	Inch	Mm	Inch	Mm	
0680951	095	1680951	.394 - .472	10-12	.591	15	.374	9.5	1/2"
0681051	105		.433 - .512	11-13	.709	18	.413	10.5	
0681151	115	1681151	.472 - .551	12-14	.748	19	.453	11.5	
0681251	125	1681251	.519 - .591	13-15	.787	20	.492	12.5	
0681351	135		.551 - .669	14-17	.906	23	.531	13.5	
0681551	155		.630 - .748	16-19	.984	25	.610	15.5	
0681751	175	1681751	.709 - .827	18-21	1.063	27	.689	17.5	
0681951	195	1681951	.787 - .984	20-25	1.339	34	.768	19.5	
0682451	245	1682451	.984 - .181	25-30	1.496	38	.965	24.5	3/4"
0682901	290	1682901	1.181 - .376	30-35	1.963	43	1.142	29	
0683301	330		1.378 - 1.575	35-40	1.890	48	1.299	33	
0683801	380		1.575 - 1.969	40-50	2.126	58	1.496	38	
0684801	480	1684801	1.969 - 2.362	50-60	2.677	68	1.890	48	
0685301	530		2.165 - 2.559	55-65	2.874	73	2.087	53	
0686301	630		2.559 - 2.953	65-75	3.268	83	2.480	63	
0687301	730	1687301	2.953 - 3.346	75-85	3.661	93	2.874	73	
0688301	830		3.346 - 3.740	85-95	4.055	103	3.268	83	
0689301	930		3.740 - 4.134	95-105	4.449	113	3.661	93	

TUBE REMOVAL TOOLS



TUBE TOOLS

TUBE PLUGS



One Piece



Two Piece

FEATURES:

- Tube plugs are designed for sealing off leaking or damaged tubes in heat exchanger, condensers, boilers etc. It ensures a uniform joint without damaging the tube sheet. removal of welded tubes from the tube sheet.
- Note: Tube plugs are available in a variety of materials like carbon steel, brass, stainless steel, fibre etc. stainless steel, fibre etc. Specify material needed when ordering.

Tube O.D. Inch Mm		One Piece Tube Plug Model No.	Two Piece Tube Plug Model No.
3/8	9.53	BPLG-375-1	-
1/2	12.70	BPLG-500-1	BPLG-500-1
5/8	15.87	BPLG-625-1	BPLG-625-2
3/4	19.05	BPLG-750-1	BPLG-750-2
7/8	22.22	BPLG-875-1	BPLG-875-2
1	25.40	BPLG-1000-1	BPLG-1000-2
1.1/4	31.75	BPLG-1250-1	BPLG-1250-2
1.1/2	38.10	BPLG-1500-1	BPLG-1500-2

RUBBER TAPERED TUBE PLUGS

DESCRIPTION

Low-pressure rubber tapered tube plugs offer a cost-effective alternative to more costly tube plugs for temporary or low-pressure applications. These plugs, made of neoprene, are typically used for low-pressure isolation or vacuum testing in combination with our Vacuum Leak Detector (VLD-2500).

Easy to install - remove with the tap of a rubber mallet or the pull of pliers; reusable with proper installation & care, and temperature resistant from -25°F to 180°F (-31°C to 82°C).

SHINGARE Industries is a leader in offering tube plug solutions to users in the oil & gas, chemical and power industries. We have more than 500,000 tube plugs in stock and ready to ship.

FEATURES:

•What are the typical uses for your rubber plugs

These tube plugs are typically used for low-pressure applications, or vacuum testing as the plugs are easily installed, tested, removed and reused

•What do I need to install these plugs

Simply tap the plug into place with a small hammer or rubber mallet until firmly in place.

•What sizes do you offer these plugs in

We carry plugs from 1/2" to 4" O.D. in stock. Please contact us if you need a plug in another size and we will be happy to help!

•What do I need to remove these plugs

Rubber tube plugs are easily removed with a firm pull on the plug from a pair of pliers.

•How Quick can I get these

We stock more than 500,000 tube plugs across all varieties and sizes. In-stock products typically ship on the same day.

•Are these plugs reusable

Yes, our rubber plugs are made of neoprene and completely reusable if taken care of and installed / removed properly.

RUBBER TAPERED TUBE PLUGS



Reusable Low-Pressure Rubber Tube Plugs for Isolation or Vacuum Testing Applications.

FEATURES:

- One size fits multiple port sizes.
- Made of resilient neoprene and is reusable.
- Soft rubber material conforms to provide a tight seal.
- In-stock items ship within 24 hours.



Tube O.D	Gauge	Model No.	Dimension (in) + / -.005			Dimension (mm) + / -.005		
			"A" SMALL	"B" LARGE	"L" LENGTH	"A" SMALL	"B" LARGE	"L" LENGTH
1/2	14-24	TP - 12 - R	0.313	0.500	0.875	7.950	12.700	22.225
5/8	13-24	TP - 15 - R	0.406	0.594	1.000	10.312	15.088	25.400
3/4	11-17	TP - 19 - R	0.500	0.656		12.700	16.662	
3/4	14-24	TP - 19-1 - R	0.563	0.750		14.300	19.050	
7/8	11-17	TP - 22 - R	0.625	0.781		15.875	19.837	
7/8	15-24	TP - 25 - R	0.719	0.938		18.263	23.825	
1	10-19							
1	11-24	TP - 28- R	0.750	1.000		19.050	25.400	
1-1/8	7-14							
1-1/8	13-19	TP - 28-1 - R	0.906	1.063		23.012	27.000	
1-1/8	16-24	TP - 31 - R	0.969	1.109		24.613	28.169	
1-1/4	10-13							
1-1/4	13-24	TP - 31-1 - R	1.031	1.250		26.187	31.750	
1-3/8	7-16	TP - 34 - 1 - R	1.063	1.344		27.000	34.138	
1-3/8	14-24	TP - 34 - R	1.188	1.438		30.175	36.525	
1-1/2	7-20	TP - 38 - 1 - R	1.125	1.500		28.575	38.100	
1-1/2	14-24	TP - 41 - R	1.312	1.625		33.325	41.275	
1-5/8	10-20							
1-5/8	16-24	TP - 41 - 1 - R	1.406	1.688		35.712	42.875	
1-3/4	10-20	TP - 44 - R	1.469	1.750		37.313	44.450	
1-3/4	12-24	TP - 44 - 1 - R	1.500	1.813		38.100	46.050	
2	7-15	TP - 50 - R	1.625	1.969		41.275	50.013	
2	12-20	TP - 50 - 1 - R	1.750	2.078		44.450	52.781	
2	18-24	TP - 57 - R	1.875	2.203		47.625	55.956	
2-1/4	8-18							
2-1/2	8-14	TP - 63 - 1 - R	2.000	2.469		50.800	62.713	
2-1/2	12-18	TP - 63 - R	2.125	2.500		53.975	63.500	
2-3/4	6-13	TP - 69 - R	2.281	2.688		57.937	68.275	
2-3/4	12-18	TP - 69 - 1 - R	2.438	2.969	1.325	61.925	75.413	34.925
3	6-16							
3	12-18	TP - 76 - R	3.000	3.500	1.500	76.200	88.900	25.400
3-1/2	13-18	TP - 88 - R	3.425	4.000	1.500	82.550	101.600	38.100
4	7-18	TP - 101 - R	3.500	5.000	2.000	88.900	127.000	25.400

ONE REVOLUTION INTERNAL TUBE CUTTER- BOTC SERIES

Size Available : 5/8" O.D. to 2 1/2" O.D.



FEATURES:

- This one revolution Internal Tube Cutter is designed for hand operation using a ratchet handle.
- BHARTIYA "One Revolution" Internal Tube Cutter pierces and cuts off non-ferrous tubes in one revolution.
- The cutter tool Bit operates on an eccentric principle. The tube cutter is entered in the tube with the Tool Bit closed position, ratchet is applied and turned in clockwise direction. The Tool bit contacts the tube during the one revolution & pierces the tube wall & as turning is continued the Tool Bit shares through the Tube along its circumference. This cutter is fitted with an adjustable collar enabling it to reach into tubes Tube along its circumference. This cutter is fitted with an adjustable collar enabling it to reach into tubes at various distances and they are available in optional increments of 2" (50.8mm). Standard adjustable reach is 6 " (152.4mm). "A" reach = 8" (203.2), B reach = 10" (254.0mm), C reach= 12" (304.8mm) etc.

Tube I.D. Range mm inch		Tube Gauge (BWG)	Tube I.D. mm inch		Cutter Model No.	Spare Bit Model No.
15.87	5/8"	14	11.4 - 11.9	.450 - .470	OTC - 625-14	OTC - 625-SB
		15-16	12.0 - 12.9	.472 - .510	OTC - 625-16	
		17-18	12.7 - 13.5	.500 - .531	OTC - 625-18	
		19-20	13.5 - 14.2	.531 - .560	OTC - 625-20	
		22	14.0 - 14.7	.550 - .580	OTC - 625-22	
19.05	3/4	14-15	14.7 - 15.5	.580 - .610	OTC - 750-14	OTC - 750-SB
		16	15.2 - 16.0	.600 - .630	OTC - 750-16	
		17-18	15.9 - 16.5	.625 - .650	OTC - 750-18	
		19-20	16.7 - 17.5	.660 - .690	OTC - 750-20	
22.22	7/8	14-15	17.8 - 18.5	.700 - .731	OTC - 875-14	OTC - 875-SB
		16-17	18.8 - 19.5	.740 - .770	OTC - 875-16	
		18	19.3 - 20.0	.760 - .790	OTC - 875-18	
		19-20	19.8 - 20.6	.780 - .810	OTC - 875-20	
25.40	1"	14	20.8 - 22.1	.820 - .850	OTC - 1000-14	OTC - 1000-SB
		15	21.3 - 22.1	.840 - .870	OTC - 1000-15	
		16-17	22.8 - 22.6	.860 - .890	OTC - 1000-16	
		18-20	22.6 - 23.1	.890 - .910	OTC - 1000-18	
		22	23.9 - 24.6	.940 - .970	OTC - 1000-22	
31.75	1 1/4	12	25.9 - 26.4	1.020 - 1.050	OTC - 1250-12	OTC - 1250-SB
		13-14	26.7 - 27.5	1.050 - 1.080	OTC - 1250-14	
		15-16	27.9 - 28.7	1.100 - 1.130	OTC - 1250-16	
		17-19	28.7 - 29.6	1.130 - 1.160	OTC - 1250-18	
38.10	1 1/2	12-13	32.5 - 33.3	1.280 - 1.310	OTC - 1500-12	OTC - 1500-SB
		14-15	33.8 - 34.5	1.330 - 1.360	OTC - 1500-14	
		16-17	34.4 - 35.3	1.360 - 1.390	OTC - 1500-16	
		18-19	35.3 - 36.1	1.390 - 1.420	OTC - 1500-18	
50.80	2	12-13	45.0 - 46.0	1.770 - 1.810	OTC - 2000-12	OTC - 2000-SB
		14-15	46.2 - 47.2	1.820 - 1.860	OTC - 2000-14	
		16-17	47.2 - 48.2	1.860 - 1.900	OTC - 2000-16	
		18-19	48.0 - 49.0	1.890 - 1.930	OTC - 2000-18	
63.50	2 1/2	12-13	57.6 - 58.6	2.270 - 2.310	OTC - 2500-12	OTC - 2500-SB
		14-15	58.9 - 60.0	2.320 - 2.360	OTC - 2500-14	
		16-17	60.0 - 61.0	2.360 - 2.400	OTC - 2500-16	
		18-19	60.7 - 61.7	2.390 - 2.430	OTC - 2500-18	

TUBE REMOVAL TOOLS



MANUAL TUBE PULLER

Size Available : 1/4" O.D. to 1" O.D.



FEATURES:

- Simple Design: Only two major parts reduce inventory
- No power needed: Manual insertion and removal of tube with a hand wrench. Ideal for field service application.
- Ease of use: Hex at back of spear allows tightening without disassembly of thrust mechanism.
- Range of Sizes: A wide range of sizes allows use on popular tube size. Clarity of marking: Both spear & thrust collar are clearly marked for last relating tool to job
- Larger sizes can be made available on request.

Tube Size							Tube Pullar Model No.	Spare Spear Model No.
O.D.		BWG	Wall Thickness		I.D.			
Inch	Mm		Inch	Mm	Inch	Mm		
1/4	6.35	18	.049	1.24	.152	3.86	BMTP-25-18	BMPS-25-18
3/8	9.52	16	.065	1.65	.245	6.22	BMTP-38-16	BMPS-38-16
3/8	9.52	18	.049	1.24	.277	7.04	BMTP-38-18	BMPS-38-18
3/8	9.52	20	.035	0.88	.305	7.75	BMTP-38-20	BMPS-38-20
1/2	12.70	14	.083	2.11	.334	8.48	BMTP-50-14	BMPS-50-14
1/2	12.70	16	.065	1.65	.370	9.40	BMTP-50-16	BMPS-50-16
1/2	12.70	18	.049	1.24	.402	10.21	BMTP-50-18	BMPS-50-18
1/2	12.70	20	.035	0.88	.430	10.92	BMTP-50-20	BMPS-50-20
5/8	15.88	14	.083	2.10	.459	11.66	BMTP-63-14	BMPS-63-14
5/8	15.88	16	.065	1.65	.495	12.57	BMTP-63-16	BMPS-63-16
5/8	15.88	18	.049	1.24	.527	13.39	BMTP-63-18	BMPS-63-18
5/8	15.88	20	.035	0.88	.555	14.10	BMTP-63-20	BMPS-63-20
3/4	19/05	14	.083	2.10	.585	14.86	BMTP-75-14	BMPS-75-14
3/4	19/05	16	.065	1.65	.620	15.75	BMTP-75-16	BMPS-75-16
3/4	19.05	18	.049	1.24	.652	16.75	BMTP-75-18	BMPS-75-18
3/4	22.22	20	.035	0.88	.680	17.27	BMTP-75-20	BMPS-75-20
7/8	22.22	14	.083	2.10	.709	18.01	BMTP-87-14	BMPS-87-14
7/8	22.22	16	.065	1.65	.745	18.92	BMTP-87-16	BMPS-87-16
7/8	22.22	18	.049	1.24	.777	19.74	BMTP-87-18	BMPS-87-18
7/8	25.40	20	.035	0.88	.805	20.45	BMTP-87-20	BMPS-87-20
1	25.40	14	.083	2.10	.834	21.18	BMTP-100-14	BMPS-100-14
1	25.40	16	.065	1.65	.870	22.10	BMTP-100-16	BMPS-100-16
1	25.40	18	.049	1.24	.902	22.91	BMTP-100-18	BMPS-100-18
1	25.40	20	.035	0.88	.930	23.62	BMTP-100-20	BMPS-100-20

PINE JENNY' STYLE TUBE PULLING ACCESSORIES

PINE JENNY TUBE SPEARS



Size Available : 3/8" O.D. To 1" O.D.

Tube OD Inch	Model No	BWG
3/8"	S-0916	16-17
3/8"	S-0918	18-19
3/8"	S-0920	20-21
3/8"	S-0922	22-24
5/8"	S-1212	12-13
5/8"	S-1214	14-15
5/8"	S-1216	16-17
5/8"	S-1218	18-19
5/8"	S-1220	20-21
3/4"	S-1911	11-13
3/4"	S-1914	14-15
3/4"	S-1916	16-17
3/4"	S-1918	18-19
3/4"	S-1920	20-21
7/8"	S-2212	12-13
7/8"	S-2214	14-15
7/8"	S-2216	16-17
7/8"	S-2218	18-19
7/8"	S-2220	20-21

TUBE SPEAR



Size Available : 1.1/4" O.D. To 3" O.D.

Tube OD Inch	Model No	BWG
1	S-2509	9
1	S-2510	10-11
1	S-2512	12-13
1	S-2514	14-15
1	S-2516	16-17
1	S-2518	18-19
1	S-2520	20-21
1-1/4	S-3112	12-13
1-1/4	S-3114	14-15
1-1/4	S-3116	16-17
1-1/4	S-3118	18-19
1-1/4	S-3120	20-21
1-1/2	S-3814	14-16
1-1/2	S-3817	17-20
1-3/4	S-4414	14-18
2	S-5014	14-18
2-1/2	S-5714	14-18
3	S-7610	10-14



EXTENSION CHAIRS

Model	Tube O.D.
80-3055-7	1.1/4"-1.1/2"
80-36307	1.3/4"
80-36308	2"2.1/4"
80-36309	2.1/2"
80-36310	2.3/4"-3



B3053-3 SINGLE PULL ADAPTOR



B3053-6 DOUBLE PULL ADAPTOR



B3055-5 MALE X MALE EXTENSION



B3055-5 MALE X FEMALE EXTENSION



B3055-4 HORSE SHOE LOCK

- Note: All the above items are compatible for use with Tube Pulling Systems of Airetool, Wilson, Elliot & other manufacturers of "Pipe Jenny" style systems.

- Extensions chair is sized to allow tube being pulled to enter I.D. Of chair, spears, Adaptors, Male x Male extension, Horse Shoe Lock & Extension Chair are needed for sizes 1.1/4" O.D. And larger. Male x Female Extensions are used for longer reach. Consult us for sizes not listed here.

Note: For details of model nos of tools, please contact us.

Our Major Clients

Please see below our robust and valued client list that uses BHARTIYA products repeatedly. We take pride in our partnerships and the ability to grow with such amazing group of companies.



SHINGARE
INDUSTRIES PVT LTD



SHINGARE INDUSTRIES PVT. LTD.

Formerly known as Bharatiya Industries



Manufacturer & Exporter of Tube Cleaners, Flexible Shafts, Tube Tools, Pipe Beveling Machines, Torque Tools, Grinding Tools, Tapping Tools.



A-48 B Osiya Mataji Compound, Village Kalher, Retibunder Road, Tal. Bhiwandi, Dist. Thane - 421302, Maharashtra,



+91 22 25854509 | +91 90290 05461 | +91 22 25883527 | bharatflex@yahoo.com | spradip@tubecleaner.co.in



www.shingare.com | www.tubecleaner.co.in

Authorised Dealer